

QLU QUALITY LEADERSHIP UNIVERSITY

Dual degree and Academic Cooperation

UNIVERSITY OF
LOUISVILLE

FIU

FLORIDA
INTERNATIONAL
UNIVERSITY



ILLINOIS STATE
UNIVERSITY
Illinois' first public university

A stylized map of the United States composed of blue dots. Three red curved arrows originate from a single point in the southern United States (near Florida) and point towards three different locations: Louisville, Kentucky; Miami, Florida; and Champaign, Illinois. Each arrow is accompanied by a small mascot icon: a red cardinal for Louisville, a red cardinal for FIU, and a yellow and blue jay for Illinois State University.

Undergraduate Programs



Quality Leadership University is a private university founded in Panama in 1997. To this date, more than 3,000 Panamanians and professionals from around the world have culminated their Bachelor's and Master's degrees in six different areas, studying completely in Panama. Today, more than 1,500 students are enrolled in our Undergraduate and Graduate Programs, as well as in our English for Success and Executive Education programs.

Quality Leadership University has collaborative agreements for graduate and undergraduate academic programs with the following prestigious universities: University of Louisville, Illinois State University, Florida International University, Universidad de Chile and Universidad Politécnica de Madrid.

Mission

To educate at the highest academic level more and better
leaders and professionals who will
actively contribute to the region's development.

Vision

To be highly recognized as one of the most important higher education
institutions in developing professional and leadership talent for
the region's corporations and organizations.

Values

Leadership as a way of life
Quality in all we do
The highest academic level
Transformational education
Respect for diversity
Passion for service
Innovative differentiation

UNIVERSITY OF
LOUISVILLE

FIU | FLORIDA
INTERNATIONAL
UNIVERSITY

 **ILLINOIS STATE
UNIVERSITY**
Illinois' first public university



BENEFITS AND ADVANTAGES:

QLU QUALITY
LEADERSHIP
UNIVERSITY

- The highest academic level in Panama.
- Accredited degrees from highly prestigious U.S.A. universities.
- The University of Louisville and Florida International University are accredited by the Commission on Colleges of the Southern Association of Colleges and Schools; (SACS); Illinois State University is accredited by the Higher Learning Commission of the North Central Association of Colleges and Secondary Schools.
- The only AACSB International accredited Bachelor of Science in Business Administration offered in Latin America by a U.S.A. university.
- The same professors who teach at the main campus of the universities in the U.S.A. also teach in Panama.
- All the courses are taught in English.
- The students have the option of completing their degree in Panama or in the U.S.A.
- Career counseling and placement services.
- The program is completely offered in Panama City.
- Our graduates are preferred when competing in the labor market.
- Student financial loans through IFARHU for Panamanian citizens and residents and V.A. Aid for U.S. citizens and residents.

UNIVERSITY OF
LOUISVILLE



FIU FLORIDA
INTERNATIONAL
UNIVERSITY



- Bachelor of Arts in Communication, completely in Panama, CTF-114-2011
- First two years of General Education Requirements.
- First two years of Pre-Engineering Education.
- Option to do the last two years of any undergraduate program in Louisville, Kentucky, paying in-state tuition.
- Programs offered in English.



**ILLINOIS STATE
UNIVERSITY**
Illinois' first public university

- Bachelor of Science in International Business, completely in Panama. CTF-184-2011
- Option to study abroad one semester in Normal, Illinois paying Panamanian tuition.
- Option to do one or the last two years in Normal - Bloomington, Illinois.
- Programs offered in English.



**FLORIDA
INTERNATIONAL
UNIVERSITY**

- Option to do one or the last two years in Miami, Florida, in the school of Business.



- Licenciatura en Administración de Empresas con énfasis en Negocios Internacionales, CTF-184-2011
- Programa ofrecido en español, con un alto componente de aprendizaje del idioma inglés.

ADMISSION REQUIREMENTS

Admission is granted to students meeting the following requirements:

Freshman admission:

Students with high school transcripts :

- Application Form
- Final high school transcripts with a minimum GPA of 2.5/4.0 or 3.2/5.0.
- Copy of High School Diploma.
- TOEFL score of 550 paper-based or 79 IBT (ETS school code 1838 and/or 6523) or IELTS's score of 6.5.

Transfer admission:

- Students with transcript from US University
- Application Form
- Official transcripts from all previous universities attended with a minimum cumulative GPA on 2.0/4.0
- Copy of High School Diploma.

Students with transcripts from non U.S. University

- Application Form
- Official transcripts from all previous universities attended with a minimum cumulative GPA of 2.0/4.0.
- WES (www.wes.org) or ECE (www.ece.org) evaluation of transcripts.
- TOEFL score of 550 paper-based or 79 IBT.
- Copy of High School Diploma.



2+2 Program



UNIVERSITY OF
LOUISVILLE

Students have the option of completing the first two years of general education courses in Panama through University of Louisville and after two years move to the Main Campus in Louisville, Kentucky; Normal, Illinois; or Miami, Florida; to complete a wide variety of majors paying reduced tuition and saving up to \$70,000.00

Pre-Business Curriculum*

Additional to the general education requirements, students may complete in their first two years Pre-Business courses that will prepare them for admission to the College of Business of University of Louisville, Illinois State University or Florida International University.

COSC 111	Micro Computer Application
ACCT 201	Principles of Managerial Accounting
ACCT 202	Principles of Financial Accounting
ECON 201	Microeconomics
ECON 201	Macroeconomics
LEGL 225	Legal Environment of Business
ECON 205	Statistics for Business and Economics
MATH 180	Elements of Calculus

Pre-Engineering Curriculum

Additional to the general education requirements, students will complete in their first two years the Pre-Engineering courses that will prepare them for admission to the J.B. Speed School of Engineering.

MATH 205	Calculus I
MATH 206	Calculus II
CHEM 201	General Chemistry I
CHEM 207	General Chemistry Lab I
CHEM 202	Chemistry II
PHYS 295	Physics I
PHYS 298	Physics Lab

* Pre-Business Curriculum are taught by Quality Leadership University and students must do ECE or WES evaluation before transferring to another US university.

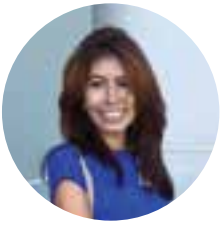
General Education Curriculum

TA207	Enjoyment of Theatre
ARTH203	Introduction to Art
HUM152	Cultures of America
HUM216	Introduction to World Religions
HUM224	Introduction to Film
WGST201	Women in American Culture
MATH111	College Algebra
MATH112	Trigonometry
MATH180	Elements of Calculus
MATH205	Calculus I*
MATH206	Calculus II*
BIOL102	Intro to Biological Systems
BIOL104	Intro to Biological Systems Lab
BIOL263	Environmental Biology
CHEM201	General Chemistry I
CHEM202	General Chemistry II*
CHEM207	Intro to Chemistry Lab
GEOS200	Global Environment
PHYS107	Elementary Astronomy
PHYS295	Physics Lab*
PHYS298	Physics*
COMM112	Business and Professional Speaking
GEN101	Campus Culture
COMM201	Introduction to Communication
HIST101	History of Civilization I
HIST102	History of Civilization II
PSYC201	Introduction to Psychology
SOC201	Introduction to Sociology
SOC202	Social Problems
COMM440	Intercultural Communication
ENGL101	College Writing
ENGL102	Intermediate College Writing*
ENGL306	Business Writing*
GEOG390	Geography of Panama
PHIL225	Business Ethics
PHIL311	Introduction to Logic
POLS399	Political Issues in Latin America
SPAN323	Spanish for the Workplace

* Students must comply with prerequisite for the course.

General Education and pre-engineering are taught in Panama with academic collaboration with the University of Louisville.

Success Testimonial



Stephanie Lievano

Gerente de Desarrollo de Nuevos Negocios, Corporación La Prensa
BA Communication, 2013, MS Human Resources 2014
Doctors Charter School of Miami Shores, 2009

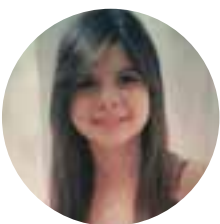
I studied BA Communication which I finished on 2013 and MS Human Resources concluded on 2014. The reason as to why I decided to study in QLU and take the 2 + 2 program was because I was curious about living outside of the United States. This program was the perfect opportunity to keep on learning while being in a vibrant and exciting new culture. What I truly appreciated of this experience were the great student/professors network and also the fact that thanks to it I have many friends all over the world. That includes the unforgettable experiences such as losing my voice cheering on for the Louisville Cardinals Men's basketball team and also being a member of Sigma Kappa Sorority studying on main campus which were stepping stones for me to pick my values and create new routes to explore the world.



Luis Andres Castillo Vasquez

Logistics and Compliance Manager @ Golden Hill Ingredients LLC
Finance Major and Entrepreneurship and Economics Minors, 2015
Colegio San Agustin, 2011

I chose to study with QLU due to their 2 + 2 program. I thought it was going to provide me with the best business education and opportunities among the different options in Panama. I believe that what's great about this program is taking all the Gen Ed classes in Panama makes the process more accessible and the in state tuition, of course. Through my experience I can say that Finance is a challenging but worthwhile program in the College of Business in Louisville. It provides great opportunities and the professors and staff are the top of the school. It also gave me the best chance to continue my education and enroll in the MBA program. I obtained this through internship, which I got since I was part of the Board of Overseers Mentorship Program. They select people based on the GPA and it is run through the honors program at UofL. They match your fields of interests with a mentor in the community. My mentor was the owner of the company where I work now. I would definitely recommend this program to others; being able to go to a top university in the US provided me with all the tools I needed to follow my dreams and be successful.



Astrid Castillero

Co-Owner + Digital Strategy Director at The Digital Life, Digital Marketing Agency.
Bachelor in Business Administration with a concentration in Management, Towson University 2014.
Magna Cum Laude.
The Oxford School 2010

Along with my parents, I started my research during my senior year and happened to be interested in QLU Business Administration - Management Program. Later that year, my school took my class to visit QLU campus among other universities, and I instantly pictured myself studying here. I think of QLU as having education ad opportunities without boundaries. The program they offered was very complete and with the opportunity to continue my education in English and receive a diploma from the United States while studying in Panama was on top of my list. Studying in QLU was definitely the best decision for my undergraduate education. Thanks to QLU I got my first job in a multinational company during my junior year, worked there for up to 2.5 years starting as an intern up to becoming the Digital Marketing Leader for renowned brands in Central America and the Caribbean. Thanks to that experience I discovered this field is my passion and decided to specialize in that area.



UNIVERSITY OF LOUISVILLE



University of Louisville (UofL) is one of the oldest and most prestigious metropolitan public universities in the United States. Founded in 1798, it is a state supported metropolitan university located in Louisville, Kentucky, the 16th largest metropolitan area in the U.S. UofL enrolls more than 22,000 students from all states and around the world in eleven colleges and schools. Quality Leadership University has had academic collaboration agreements with University of Louisville since 1998.

How does it work?

- Obtain a Bachelor's Degree in Communication from University of Louisville studying completely in Panama.
- Study the first two years of general education requirements in Panama and complete your degree in Louisville, Kentucky paying in-state tuition, which represents savings of more than \$70,000.00.
- Study 5 academic semesters in Panama and complete an Engineering degree in Louisville, Kentucky also earning professional engineering work experience.

Accreditation



Majors

College of Arts & Sciences

Aerospace Science
Anthropology
Art
Art Education
Art History
Biology
Chemistry
Classical / Modern Languages
Communication
Criminal Justice
English
Foreign Language
Foreign Literature
Graphic Design
Geography
History
Humanities
Interior Design
Latin American & Latino Studies
Liberal Studies
Mathematics
Military Science
Philosophy
Physics and Astronomy
Political Science
Psychological & Brain Sciences
Sociology
Theatre Arts
Urban & Public Affairs
Women's & Gender Studies

College of Business

Accountancy
Business Administration
Computer Information Systems
Economics
Entrepreneurship (Minor)
Equine Business
Finance
International Business (Minor)
Management (Minor)
Marketing

School of Dentistry

Dental Hygiene

College of Education & Human Development

Exercise Science
Early Elementary Education
Middle School Education
Music Education
Physical Education
Public Health Education
Organizational Leadership and Learning
Secondary Education
Special Education
Sport Administration
Wellness Coaching (Minor)
World Language Education

Kent School of Social Work

Social Work

School of Music

Computer Music Studios
Instrumental Performance
Jazz
Keyboard Studies
Music Composition
Music Education
Music History
Music Theory
Music Therapy
Vocal Performance

School of Nursing

Nursing

School of Public Health

Public Health

Speed School of Engineering

Bioengineering
Chemical Engineering
Civil and Environmental Engineering
Electrical and Computer Engineering
Computer Engineering and Computer Science
Industrial Engineering
Mechanical Engineering

University of Louisville is
ranked by:



UNIVERSITY OF
LOUISVILLE





Florida International University (FIU) is worlds ahead in its service to the community, as Miami's first and only four-year public research university. With a student body of more than 57,900, FIU is the 4th largest university in the United States. Ninety-six percent of the university's full-time faculty hold doctorates or the highest degree in their field. FIU is currently #1 in the nation in awarding bachelor's and master's degrees to Hispanic students.

Students have a unique opportunity to obtain an undergraduate degree by transferring their credits from Quality Leadership University in Panama to the prestigious School of Business of Florida International University in Miami, ranked 5th in the USA in international business programs.

How does it work?

The students register to take courses at Quality Leadership University's programs in Panama to complete two or three years of education. Afterwards, during the third year of studies, they transfer to FIU's College of Business in Miami to complete an undergraduate degree in Business Administration from Florida International University.

Major in Business

Bachelor of Accounting
Bachelor in Business Administration

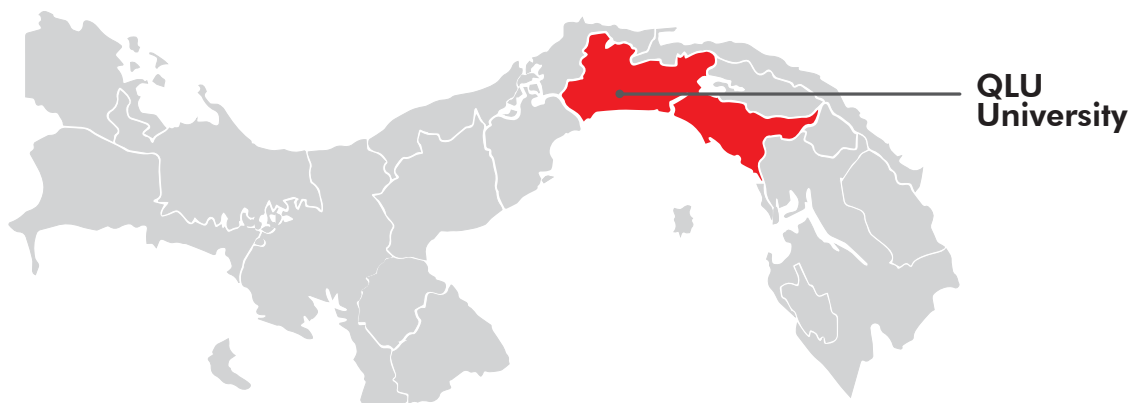
- Finance
- Human Resource Management
- International Business
- Logistics and Supply Chain Management
- Management
- Management Information Systems
- Marketing
- Real Estate

Accreditation



FIU is ranked by:

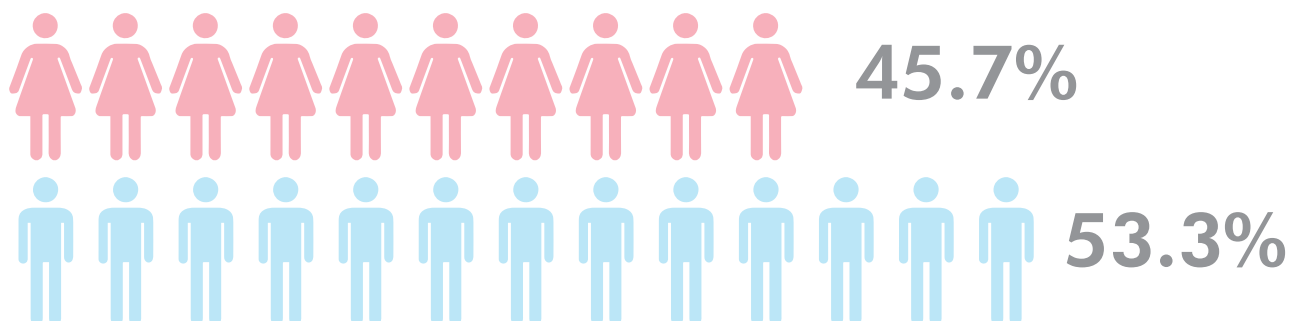




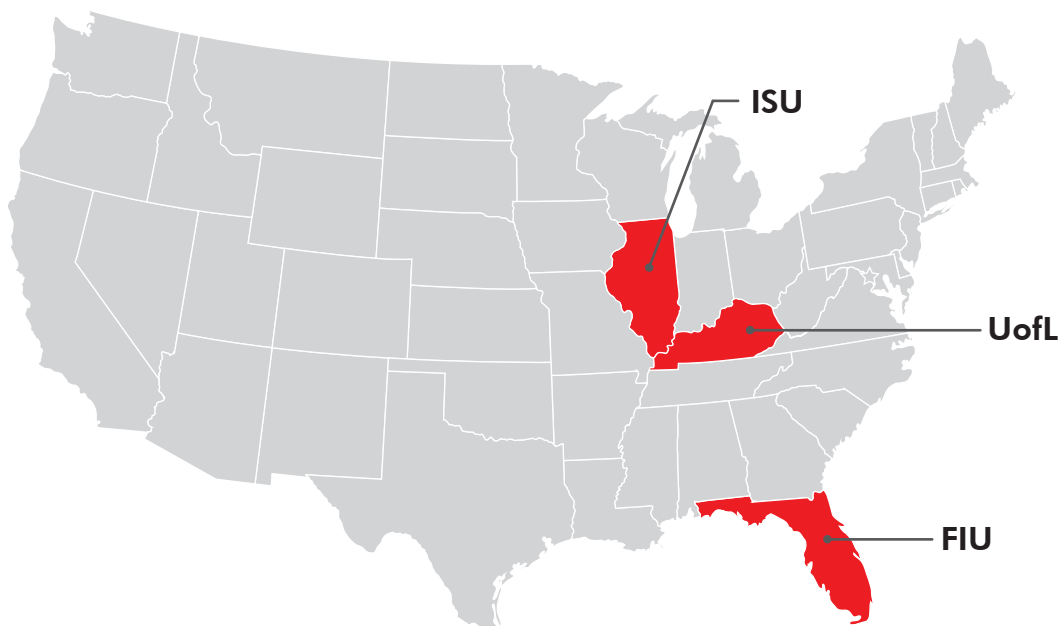
Top 3 High School Admission 2016 - 2017

- 1 Academia Interamericana de Panamá
- 2 Colegio Brader
- 3 Instituto Alberto Einstein.

Enrollment by gender



US Universities partner location





ILLINOIS STATE UNIVERSITY

Illinois' first public university



Illinois State University (ISU), founded in 1857, is the oldest public university in Illinois, United States; it is located in the town of Normal two hours South of Chicago. ISU grants a variety of doctoral degrees, emphasizes teaching, and encourages faculty to conduct additional research. ISU is also recognized as the largest producers of teachers in the US according to the American Association of Colleges of Teacher Education. ISU enrolls more than 21,000 students.

Illinois State is accredited by the Commission on Institutions of Higher Education of the North Central Association of Colleges and Secondary Schools. The teacher preparation programs are accredited by the National Council for Accreditation of Teacher Education and are certified by the Illinois State Board of Education. In addition, 22 programs hold discipline-based accreditation.

How does it work?

- Obtain a Bachelor of Science in International Business from Illinois State University studying completely in Panama.
- Earn a scholarship for a semester abroad in Illinois State University.
- Study one or two years in Panama and complete your degree in Normal, Illinois which represents savings of more than \$70,000.00

Accreditation



Majors

College of Applied Science and Technology

Agriculture
Agribusiness
Animal Industry Management
Pre-Veterinary Medicine
Athletic Training
Community Health Education
Computer Science - General Computer Science
Computer Systems Technology
Construction Management
Criminal Justice Sciences
Cybersecurity
Engineering Technology
Environmental Health
Exercise Science
Family & Consumer Sciences
Fashion Design and Merchandising
Food Industry Management
Food, Nutrition and Dietetics
Graphic Communications
Health Information Management
Human Development and Family Science
Information Systems
Interior Design
Medical Laboratory Science
Network and Telecommunications Management
Physical Education Teacher Education K-12
Recreation & Park Administration Management
Renewable Energy
Safety
School Health Education
Technology and Engineering Education

College of Arts and Sciences

Actuarial Science
Anthropology
Biochemistry

Biology
Chemistry
Communication
Computer Physics
Earth and Space Science Teacher Education
Economics
Engineering Physics
English
Foreign Language
Geography
Geology
History
Journalism
Legal Studies
Mass Media
Mathematics
Philosophy
Physics
Political Science
Psychology
Public Relations
Social Work
Sociology
Spanish
Spanish Teacher Education

College of Business

Accounting
Business Administration
Business Information Systems
Business Teacher Education
Finance
Insurance
International Business
Management
Marketing

College of Education

Early Childhood Education
Elementary Education
Middle Level Education
Secondary Education
Special Education

College of Fine Arts

Art
Art History
Art Teacher Education
Art Technology
Dance Performance
Dance Teacher Education
Graphics Design
Music
Music Business
Music Composition
Music Education
Music Therapy
Studio Arts
Theatre

Mennonite College of Nursing
Nursing

Ranked by:



Bachelor of Arts in Communication



Academic Program

Campus Culture

Introduction to Psychology

Business and Professional Speaking

College Writing

College Algebra

Global Environment

Principles of Communications

Introduction to Biological Systems

Introduction to Biological Systems Lab

Political Issues in Latin America

Intermediate College Writing

Microeconomics

Principles of Mass Communication

Introduction to Communication Technology

Interpersonal Communication

Introduction to Sociology

Statistics for Business and Economics

Information and Technology for Business

Arguments in Every Day Life

Cultures of America

Macroeconomics

Principle of Marketing

Introduction to Arts

Research Communication

Social Problems

Geography of Panama

Newswriting

Introduction to Film

Introduction to Advertising

Legal Environment of Business

Business Ethics

History of Civilization II

Enjoyment of Theatre

Video Communication

Spanish for the Workplace

Introduction to Logic

Desktop Publishing

Elementary Astronomy

Business Writing

Media, Culture and Society

Intercultural Communication

Strategic Communication Campaigns

The Bachelor of Arts in Communication, in academic agreement with University of Louisville, allows the student the opportunity to earn a degree from a prestigious university from the United States of America without leaving Panama.

What can you do with a degree in Communications?

- ★ Television and radio executive
- ★ Newspaper and magazine executive
- ★ News and feature magazine writer
- ★ Advertising and public relations executive
- ★ Sports marketing writer/executive
- ★ Events planner
- ★ Advertising or marketing specialist
- ★ Account executive
- ★ Sales manager
- ★ Media planner
- ★ Media sales representative
- ★ Radio announcer
- ★ News anchor
- ★ Public relations manager
- ★ Producer



Bachelor of Science in International Business



**ILLINOIS STATE
UNIVERSITY**
Illinois' first public university

Academic Program

College Writing
College Algebra
Business and Professional Speaking
Intro. to Psychology
Campus Culture

History of Civilization II
Intro to Biological Systems
Intro to Biological Systems Lab
Global Environment
Intermediate College Writing

Business Writing
Principles of Accounting I
Microcomputer Applications
Elements of Calculus
Principles of Communications

Principles of Accounting II
Legal Environment of Business
Enjoyment of Theatre
Political Issues in Latin America

Cultures of America
Microeconomics
Statistics for Business and Economics
Business Ethics

Macroeconomics
Business Organization & Management
Spanish for the Workplace
Social Problems

Intro to Marketing Management
Operation Management
Professional and Career Development

Marketing Research
Understanding the Global Business Environment
Business Finance
Business in a Multicultural Environment

Consumer Behavior
Information Systems in Organizations
Professional Relationship Selling
International Internship

International Management
International Law
International Marketing
Organizational strategy
ETS Exam

The Bachelor of Science in International Business, in academic agreement with Illinois State University, allows the student the opportunity to earn a degree from a prestigious university from the United States of America without leaving Panama.

What can you do with a Bachelor's degree in International Business?

- ★ Business owner
- ★ Operations manager
- ★ Production manager
- ★ International business consultant
- ★ Entrepreneur
- ★ Small business owner
- ★ Marketing manager
- ★ Human resources manager
- ★ Work in others countries
- ★ International sales executive
- ★ Manager of International department
- ★ Multinational companies executive



Campus Life



University of Louisville in Panama

Please return this completed application and all required credentials to:

Universidad de Louisville
Calle 45, Bella Vista
Panama City, Republic de Panama
Telephone: 507-264-0777
Fax Number: 507-264-7962

ADMISSION REQUIREMENTS

FRESHMAN APPLICANTS <input type="checkbox"/> Application for Undergraduate Admissions <input type="checkbox"/> Official ACT or SAT test scores* <input type="checkbox"/> Official high school transcript <input type="checkbox"/> TOEFL and/or Institutional TOEFL	TRANSFER APPLICANTS Transfer applicants with 23 or fewer semester hours earned or in progress must submit the following: <input type="checkbox"/> Application for Undergraduate Admissions <input type="checkbox"/> Official ACT or SAT test scores* <input type="checkbox"/> Official high school transcript including the date of graduation. An official transcript must also be submitted from EACH college or university attended even if credit was not earned <input type="checkbox"/> TOEFL or Institutional TOEFL Transfer applicants with 24 or more semester hours earned or in progress must submit the following: <input type="checkbox"/> Application for Undergraduate Admissions <input type="checkbox"/> An official transcript from EACH college or university attended must be submitted even if credit was not earned. All University of Louisville transcripts will automatically be submitted with this application. <input type="checkbox"/> TOEFL or Institutional TOEFL
*must be submitted directly from test agency to the University of Louisville Office of Admissions	

PERSONAL DATA

(Applications that are not typed or printed legibly will not be accepted)

1. Full Legal Name: Ms./ Mr. _____ Last (family name) First Name Other names under which records may be listed _____	
2. Date of Birth: ____ / ____ / ____ m m d d y y	3. Sex: _____ Male _____ Female
4. Citizenship: Country of Birth _____ City of Birth _____ Country of Citizenship: _____ Country of legal permanent residency: _____	5. Ethnic Background (check one) <input type="checkbox"/> White/Non-Hispanic <input type="checkbox"/> Hispanic <input type="checkbox"/> Black/African-American <input type="checkbox"/> American Indian <input type="checkbox"/> Asian or Pacific Islander
6. Address: _____ (Home Address) Street _____ City Country _____ (Mailing address, if different)	7. Telephone: (_____) _____ Home Phone (_____) _____ Alternate Phone
	8. Email Address: _____
9. Emergency Contact: Name _____ Relationship _____ Address _____ Telephone _____	

EDUCATIONAL INFORMATION

*Transcripts from previously attended institutions are required.

List ALL high schools attended (beginning with most recent):

Name	City /State/Country	Attended (mo/yr)	Date of Graduation
_____	_____	___/___ to ___/___	_____
_____	_____	___/___ to ___/___	_____

List ALL colleges attended (beginning with most recent):

Name	City /State/Country	Attended (mo/yr)	Degree
_____	_____	___/___ to ___/___	_____
_____	_____	___/___ to ___/___	_____

Are you currently enrolled in college? ____ Yes ____ No

Total credit hours earned _____

Cumulative Grade Point Average _____

Academic Status at the last college attended: ____ Good Standing ____ Probation ____ Dismissal

I understand that making false statements and providing incomplete information may result in the cancellation of my admission and/or registration. I certify that the information provided in completing this application is true and correct.

Signature

Date

The University of Louisville is an equal opportunity institution and does not discriminate against persons because of race, age, religion, sex, handicap, color, or national origin. Completion of related items is optional; however, it will aid in the prompt processing of your application and will be used for federal, state, and affirmative action reporting purposes.

For Office Use Only:

PRG: _____ PLAN: _____ TERM: _____ GRP: _____
ACTR: _____ RSTR: _____ ACAD/LEV: _____
NR ☐

Contingencies:

☐ FT/HS ☐ FT/ _____
Other: _____
Adm. Cond. Ckfst: _____
Enclosure _____
Date: _____ By: _____

Notes: _____

Missing: _____
Test Scores: _____
Toefl: _____
Transcripts: _____
GPA: _____ ACT/SAT: _____
PCCE ☐
Fee Payment: _____

Observations:

QLU QUALITY LEADERSHIP UNIVERSITY

UNIVERSITY OF
LOUISVILLE

FIU | FLORIDA
INTERNATIONAL
UNIVERSITY



ILLINOIS STATE
UNIVERSITY
Illinois' first public university



@qlupanama



qlupanama



qlupanama



www.qlu.ac.pa



264-0777



info@qlu.ac.pa