

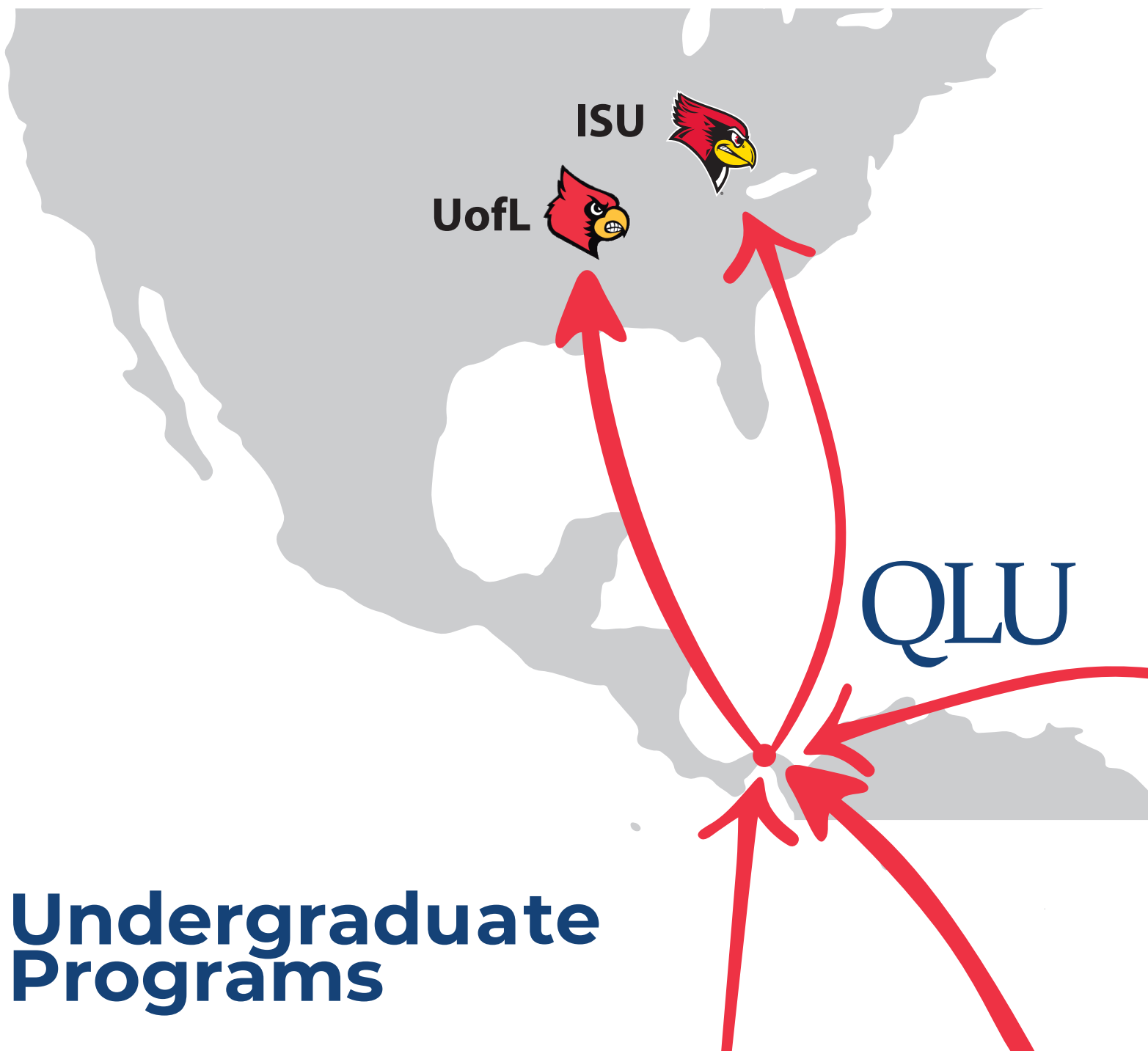
QLU QUALITY LEADERSHIP UNIVERSITY

Dual Degree and Academic Collaboration

UNIVERSITY OF
LOUISVILLE



ILLINOIS STATE
UNIVERSITY
Illinois' first public university



**Undergraduate
Programs**



Quality Leadership University is a private university founded in Panama in 1997. To this date, more than 3,000 Panamanians and professionals from around the world have culminated their Bachelor's and Master's degrees in six different areas, studying completely in Panama. Today, more than 1,500 students are enrolled in our Undergraduate and Graduate Programs, as well as in our English for Success and Executive Education programs.

Quality Leadership University has collaborative agreements for graduate and undergraduate academic programs with the following prestigious universities: University of Louisville, Illinois State University, Universidad de Chile and Universidad Politécnica de Madrid.

Mission

To educate at the highest academic level more and better leaders and professionals who will actively contribute to the region's development.

To be highly recognized as one of the most important higher education institutions in developing professional and leadership talent for the region's corporations and organizations.

Vision

Values

- Leadership as a way of life
- Quality in all we do
- The highest academic level
- Transformational education
- Respect for diversity
- Passion for service
- Innovative differentiation

UNIVERSITY OF
LOUISVILLE



ILLINOIS STATE
UNIVERSITY

Illinois' first public university



BENEFITS AND ADVANTAGES:

UNIVERSITY OF
LOUISVILLE



**ILLINOIS STATE
UNIVERSITY**
Illinois' first public university

QLU QUALITY
LEADERSHIP
UNIVERSITY

- Students have the option of completing their degree in Panama or in the U.S.A.
- The highest academic level in Panama.
- The same professors who teach at the Main Campus of the universities in the U.S.A. also teach in Panama.
- Accredited degrees from highly prestigious U.S.A. universities.
- Schedules: Monday - Thursday from 8 A.M. - 12 P.M.
- Career counseling and placement services.
- The only AACSB International accredited Bachelor of Science in Business Administration offered in Latin America by a U.S.A. university.
- All courses are taught in English.
- The University of Louisville is accredited by the Commission on Colleges of the Southern Association of Colleges and Schools; (SACS); Illinois State University is accredited by the Higher Learning Commission of the North Central Association of Colleges and Secondary Schools; **Quality Leadership University is accredited by Consejo de Evaluación y Acreditación Universitaria de Panamá (CONEAUPA).**
- Our graduates are preferred when competing in the job market.
- Student financial loans through IFARHU for Panamanian citizens and V.A. Aid for U.S. citizens.
- Free Institutional TOEFL.

ADMISSION REQUIREMENTS FOR:



UNIVERSITY OF
LOUISVILLE



ILLINOIS STATE
UNIVERSITY
Illinois' first public university

Admission is granted to students meeting the following requirements:

Freshman admission:

Students with high school transcripts :

- Application Form.
- Final High School transcripts with a minimum GPA of 2.5/4.0 or 3.2/5.0.
- Copy of High School Diploma.
- TOEFL score of 550 paper-based or 79 IBT (ETS school code 1838) or IELTS's score of 6.5. (Required for students applying to University of Louisville or Illinois State University programs).

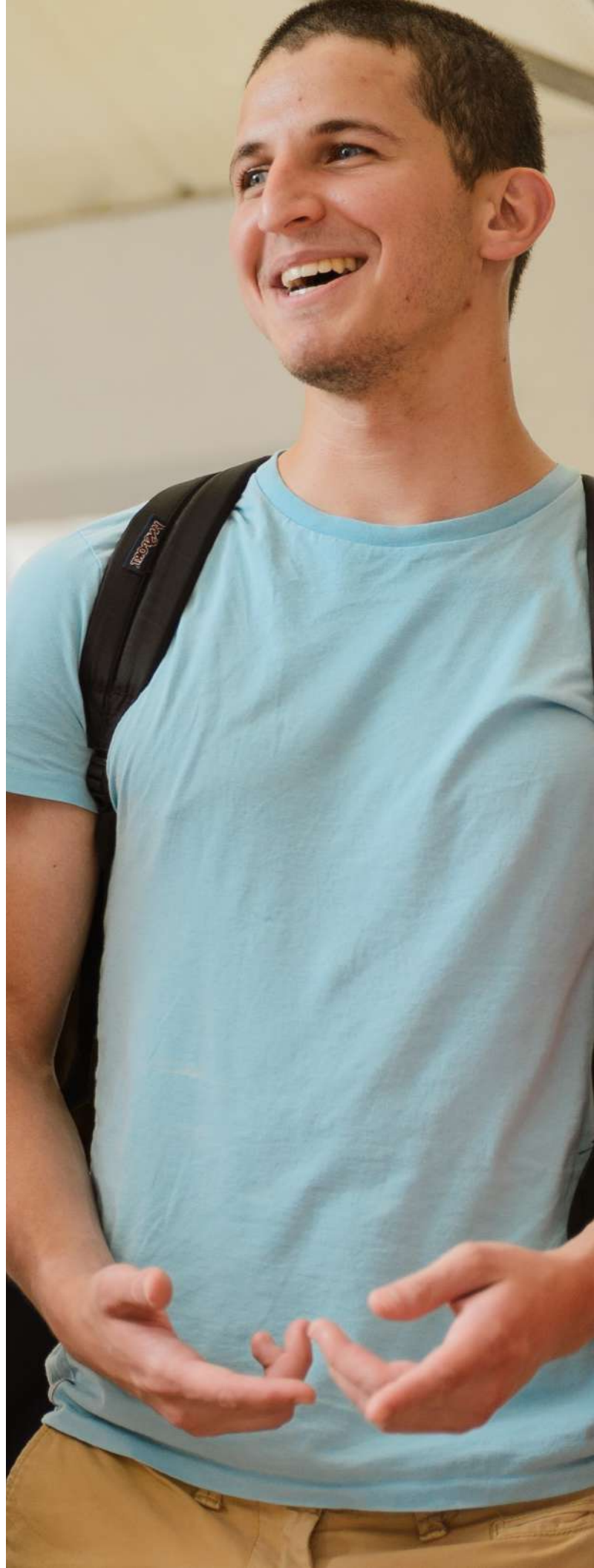
Transfer admission:

Students with transcript from U.S. University

- Application Form
- Official transcripts from all previous universities with a minimum cumulative GPA on 2.0/4.0
- Copy of High School Diploma.
- Proof of English proficiency.

Students with transcripts from non U.S. University

- Application Form.
- Official transcripts from all previous universities attended with a minimum cumulative GPA of 2.0/4.0.
WES (www.wes.org) or ECE (www.ece.org) evaluation of transcripts.
- TOEFL score of 550 paper-based or 79 IBT (ETS school code 1838) or IELTS's score of 6.5.
- Copy of High School Diploma.

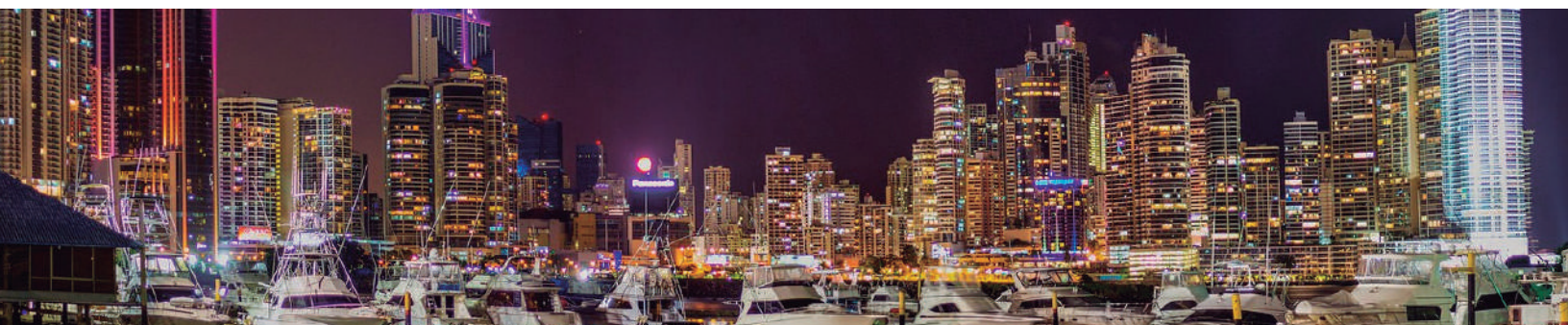




- Bachelor of Arts in Communication, completely in Panama, CTDA-092-2018.
- First two years of General Education Requirements.
- First two years of Pre-Engineering Education.
- Option to do the last two years of many undergraduate program in Louisville, Kentucky, paying in-state tuition.
- Programs offered in English.
- Option of minors in Humanities and Sociology for students enrolled in the B.A. in Communication.



- Bachelor of Science in International Business, completely in Panama CTDA-177-2018.
- Option to study abroad one semester in Normal, Illinois paying Panamanian tuition.
- Option to do one or the last two years in Normal - Bloomington, Illinois.
- Study 5 years and obtain a B.S. International Business and a Master in Business Administration.
- Programs offered in English.



- Licenciatura en Administración de Empresas con énfasis en Negocios Internacionales, CTDA-177-2018.
- Programa ofrecido en español, con un alto componente de aprendizaje del idioma inglés.
- Opción de transferirse los últimos dos años a los programas de University of Louisville e Illinois State University.



Quality Leadership University fue fundada en 1997 bajo el liderazgo de Oscar León, quien tuvo la visión de ofrecer el más alto nivel académico en Panamá con el objetivo de preparar líderes y profesionales que contribuyan al desarrollo de la región. A la fecha, más de 3,000 panameños y extranjeros de todas partes del mundo han recibido sus diplomas de licenciatura y maestría en diversas áreas profesionales.

Con más de 1.500 estudiantes matriculados en nuestros programas de licenciatura y maestría, así como en nuestros programas de Inglés para el Éxito Profesional y Educación Continua, Quality Leadership University mantiene acuerdos académicos con universidades reconocidas mundialmente como Illinois State University, University of Louisville, Universidad de Chile y Universidad Politécnica de Madrid.

Opciones

- Licenciatura en Administración de Empresas con énfasis en Negocios Internacionales, CTDA-177-2018.
- Programa ofrecido en español, con una beca de aprendizaje del idioma inglés.
- Opción de culminar la Licenciatura en Administración de Empresas con énfasis en Negocios Internacionales con Illinois State University, CTDA-177-2018.
- Opción de culminar la Licenciatura en Ciencias de la Comunicación con University of Louisville, CTDA-092-2018.
- Opción de transferirse los últimos dos años al campus central de University of Louisville en Louisville, Kentucky.
- Opción de transferirse los últimos dos años al campus central de Illinois State University en Normal, Illinois.

Acreditación



2+2

UNIVERSITY OF LOUISVILLE

Students have the option of completing the first two years of general education courses in Panama through University of Louisville and transfer to the Main Campus in Louisville, Kentucky; to complete a wide variety of majors paying reduced tuition and saving up to \$70,000.

Arts

TA207	Enjoyment of Theatre
ARTH203	Introduction to Art

Humanities

HUM152	Cultures of America
HUM216	Introduction World Religions
HUM224	Introduction to Film
WGST201	Women in American Culture
HUMM338	Greek Mythology
PHIL225	Business Ethics
SPAN323	Spanish for the Workplace

Mathematics

MATH105	Quantitative Reasoning
MATH111	College Algebra
MATH112	Trigonometry
MATH180	Elements of Calculus
MATH205	Calculus I
MATH206	Calculus II

Natural Science

BIOL102	Intro to Biological Systems
BIOL104	Intro to Biological Systems Lab
BIOL263	Environmental Biology
CHEM101	Intro to chemistry
CHEM201	General Chemistry I
CHEM202	General Chemistry II
CHEM207	Intro to Chemistry Lab
GEOS200	Global Environment

Oral Communication

COMM112	Business and Professional Speaking
---------	------------------------------------

Orientation

GEN101	Campus Culture
--------	----------------

transfer Social Science

COMM201	Introduction to Communication
HIST101	History of Civilization I
HIST102	History of Civilization II
PYC201	Introduction to Psychology
SOC201	Introduction to Sociology
SOC202	Social Problems
SOC320	Social Theory
SOC323	Diversity and Inequality
SOC336	Criminology
GEOG390	Geography of Panama
POLS399	Political Issues in Latin America

Written Communication

COMM320	Newswriting
COMM350	Intercultural Communication
ENGL101	College Writing
ENGL102	Intermediate College Writing
ENGL306	Business Writing

Pre-Engineering Curriculum

MATH205	Calculus I
MATH206	Calculus II
MATH112	Trigonometry
CHEM101	Intro to Chemistry
CHEM201	General Chemistry I
CHEM202	General Chemistry II
CHEM207	Intro to Chemistry Lab
PHYS107	Elementary Astronomy
PHYS295	Physics Lab
PHYS298	Physics

Pre-Business Curriculum

COSC111	Micro Computer Application
ACCT 201	Principles of Managerial Accounting
ACCT 202	Principles of Financial Accounting
ECON 201	Microeconomics
ECON 201	Macroeconomics
LEGL 225	Legal Environment of Business
ECON 205	Statistics for Business and Economics
MATH 180	Elements of Calculus

The Pre-Business Curriculum are taught by Quality Leadership University and students must do ECE or WES evaluation before transferring to another U.S. university.

General Education and Pre-Engineering Courses are taught in Panama in academic collaboration with University of Louisville.



University of Louisville (UofL) is one of the oldest and most prestigious metropolitan public universities in the United States. Founded in 1798, it is a state supported metropolitan university located in Louisville, Kentucky, the 16th largest metropolitan area in the U.S. UofL enrolls more than 22,000 students from all states and around the world in eleven colleges and schools. Quality Leadership University has had academic collaboration agreements with University of Louisville since 1998.

How does it work?

- Obtain a Bachelor's Degree in Communication from University of Louisville studying completely in Panama.
- Study the first two years of general education requirements in Panama and complete your degree in Louisville, Kentucky paying in-state tuition, which represents savings of more than \$70,000
- Study 5 academic semesters in Panama and complete an Engineering degree in Louisville, Kentucky also earning professional engineering work experience.
- Obtain a minor in Humanities.
- Obtain a minor in Sociology.

Accreditations



AACSB
ACCREDITED



Majors

College of Arts and Science

Aerospace Science
Anthropology
Art
Art Education
Art History
Biology
Chemistry
Classical / Modern Languages
Communication
Criminal Justice
English
Foreign Language
Foreign Literature
Graphic Design
Geography
History
Humanities
Interior Design
Latin American & Latino Studies
Liberal Studies
Mathematics
Military Science
Philosophy
Physics and Astronomy
Political Science
Psychological & Brain Sciences
Sociology
Theatre Arts
Urban & Public Affairs
Women's & Gender Studies

College of Business

Accountancy
Business Administration
Computer Information Systems
Economics
Entrepreneurship (Minor)
Equine Business
Finance
International Business (Minor)
Management (Minor)
Marketing

School of Dentistry

Dental Hygiene

College of Education and Human Development

Exercise Science
Early Elementary Education
Middle School Education
Music Education
Physical Education
Public Health Education
Organizational Leadership and Learning
Secondary Education
Special Education
Sport Administration
Wellness Coaching (Minor)
World Language Education

Kents School of Work

Social Work

School of Music

Computer Music Studios
Instrumental Performance
Jazz
Keyboard Studies
Music Composition
Music Education
Music History
Music Theory
Music Therapy
Vocal Performance

School of Nursing

Nursing

School of Public Health

Public Health

Speed School of Engineering

Bioengineering
Chemical Engineering
Civil and Environmental Engineering
Electrical and Computer Engineering
Computer Engineering and Computer Science
Industrial Engineering
Mechanical Engineering

And others

University of Louisville is
ranked by:





ILLINOIS STATE UNIVERSITY

Illinois' first public university



Illinois State University (ISU), founded in 1857, is the oldest public university in Illinois, United States; it is located in the town of Normal, two hours south of Chicago. ISU grants a variety of doctoral degrees, emphasizes teaching, and encourages faculty to conduct additional research. ISU is also recognized as the largest producer of teachers in the US according to the American Association of Colleges of Teacher Education. ISU enrolls more than 21,000 students.

Illinois State is accredited by the Commission on Institutions of Higher Education of the North Central Association of Colleges and Secondary Schools. The teacher preparation programs are accredited by the National Council for Accreditation of Teacher Education and are certified by the Illinois State Board of Education. In addition, 22 programs hold discipline-based accreditation.

How does it work?

- Obtain a Bachelor of Science in International Business from Illinois State University studying completely in Panama.
- Earn a scholarship for a semester abroad in Illinois State University.
- Study two years in Panama and complete your degree in Normal, Illinois which represents savings of more than \$70,000.
- Study 5 years and obtain a Bachelor in Science in International Business and Master in Business Administration.

Accreditations



Majors

College of Applied Science and Technology

Agriculture
Agribusiness
Animal Industry Management
Pre-Veterinary Medicine
Athletic Training
Community Health Education
Computer Science - General Computer Science
Computer Systems Technology
Construction Management
Criminal Justice Sciences
Cybersecurity
Engineering Technology
Environmental Health
Exercise Science
Family & Consumer Sciences
Fashion Design and Merchandising
Food Industry Management
Food, Nutrition and Dietetics
Graphic Communications
Health Information Management
Human Development and Family Science
Information Systems
Interior Design
Medical Laboratory Science
Network and Telecommunications Management
Physical Education Teacher Education K-12
Recreation & Park Administration Management
Renewable Energy
Safety
School Health Education
Technology and Engineering Education

College of Arts and Sciences

Actuarial Science
Anthropology
Biochemistry

Biology
Chemistry
Communication
Computer Physics
Earth and Space Science
Teacher Education
Economics
Engineering Physics
English
Foreign Language
Geography
Geology
History
Journalism
Legal Studies
Mass Media
Mathematics
Philosophy
Physics
Political Science
Psychology
Public Relations
Social Work
Sociology
Spanish
Spanish Teacher Education

College of Business

Accounting
Business Administration
Business Information Systems
Business Teacher Education
Finance
Insurance
International Business
Management
Marketing

College of Education

Early Childhood Education
Elementary Education
Middle Level Education
Secondary Education
Special Education

College of Fine Arts

Art
Art History
Art Teacher Education
Art Technology
Dance Performance
Dance Teacher Education
Graphics Design
Music
Music Business
Music Composition
Music Education
Music Therapy
Studio Arts
Theatre

Mennonite College of Nursing
Nursing

Ranked by:



Obtain a U.S. degree, completely in Panama

Bachelor of Arts in Communication

Academic Program

Campus Culture
Introduction to Psychology
Business and Professional Speaking
College Writing
College Algebra

Global Environment
Principles of Communications
Introduction to Biological Systems
Introduction to Biological Systems Lab

Political Issues in Latin America
Intermediate College Writing
Microeconomics
Principles of Mass Communication

Introduction to Communication Technology
Interpersonal Communication
Introduction to Sociology
Statistics for Business and Economics
Diversity and Inequality

Arguments in Every Day Life
Cultures of America
Macroeconomics
Principle of Marketing
Introduction to Arts

Research Communication
Social Problems
Geography of Panama
Newsriting
Introduction to Film

Introduction to Strategic Communication
Criminology
Business Ethics
History of Civilizations II
Enjoyment of Theatre

Video Communication
Spanish for the Workplace
Social Theory
Desktop Publishing
Environmental Biology

Business Writing
Intro to World Religions
Intercultural Communication
Advanced Strategic Communication



The Bachelor of Arts in Communication, in academic agreement with University of Louisville, allows the student the opportunity to earn a degree from a prestigious university from the United States of America without leaving Panama.

What can you do with a degree in Communications?

- ★ Television and radio executive
- ★ Newspaper and magazine executive
- ★ News and feature magazine writer
- ★ Advertising and public relations executive
- ★ Sports marketing writer/executive
- ★ Events planner
- ★ Advertising or marketing specialist
- ★ Account executive
- ★ Sales manager
- ★ Media planner
- ★ Media sales representative
- ★ Radio announcer
- ★ News anchor
- ★ Public relations manager
- ★ Producer



Minor in Sociology



The Sociology program students learn to take an analytical, evidence-driven approach to social issues, as well as gain the interpersonal communication skills necessary to craft persuasive narratives grounded in critical thought. Sociology students focus on diversity and inequality and use their analytical insight into social structures for effective formulation and implementation of democratic social policy.

Those intered in sociology are intrigued by the challenging social issues pervading our world, how society influences and is influenced by them, and how to effectuate change. Sociology students learn how to adress these issues through scientific research and application, and, as our world continuously evolves, they are well prepared to offer insight into these changes and how best to accomodate them.

Given the breadth, adaptability, and utility of sociology, employment opportunities are plentiful in social service agencies; federal, state, and local governments; non-profit organizations; and private interprises.

Core Courses

SOC 301 Intro.to Social Statistics

SOC 303 Intro.to Research Methods

SOC 320 Social Theory

SOC 323 Diversity & Inequality

Electives

SOC 336 Criminology

SOC 202 Social Problems

Minor in Humanities:

The Department of Comparative Humanities facilitates the discovery, synthesis and application of ideas across disciplines. The department serves as an umbrella for collaborative efforts among the disciplines. The department offers a program as well as interdisciplinary humanities courses that encourage students to examine text, creative expression and ideas and values. Department advisers and professors work with each humanities major to create individualized programs that reflect the student’s goal and interests.

Core Courses

ARTH 203 Art History

HUMM 216 Intro. to World Religions

HUMM 224 Intro to Film

HUMM 326 Language and Film

HUMM 363 Magic Realism

ENGL 306 Business Writing

HUMM 509 Interdisciplinary Approaches to Arts and Humanities

Obtain a U.S. degree, completely in Panama

Bachelor of Science in International Business

Academic Program

College Writing
College Algebra
Business and Professional Speaking
Intro. to Psychology
Campus Culture

History of Civilization II
Intro to Biological Systems
Intro to Biological Systems Lab
Global Environment
Intermediate College Writing

Business Writing
Principles of Accounting I
Microcomputer Applications
Elements of Calculus
Principles of Communications

Principles of Accounting II
Legal Environment of Business
Enjoyment of Theatre
Political Issues in Latin America

Cultures of America
Microeconomics
Statistics for Business and Economics
Business Ethics

Macroeconomics
Principles of Management
Spanish for the Workplace
Social Problems

Principles of Marketing
Operation Management
Professional and Career Development

Marketing Research
Understanding the Global Environment of Business
Business Finance
Business in a Multicultural Environment

Consumer Behavior
Information Systems in Organizations
Professional Relationship Selling
International Internship

International Management
International Law
International Marketing
Organizational strategy
ETS Exam



ILLINOIS STATE UNIVERSITY
Illinois' first public university

The Bachelor of Science in International Business, in academic agreement with Illinois State University, allows the student the opportunity to earn a degree from a prestigious university from the United States of America without leaving Panama.

What can you do with a Bachelor's degree in International Business?

- ★ Business owner
- ★ Operations manager
- ★ Production manager
- ★ International business consultant
- ★ Entrepreneur
- ★ Small business owner
- ★ Marketing manager
- ★ Human resources manager
- ★ Work in others countries
- ★ International sales executive
- ★ Manager of International department
- ★ Multinational companies executive



Meet Our Graduates



Stephanie Lievano

Gerente de Desarrollo de Nuevos Negocios, Corporación La Prensa
BA Communication, 2013, MS Human Resources 2014
Doctors Charter School of Miami Shores, 2009

I studied BA Communication which I finished on 2013 and MS Human Resources concluded on 2014. The reason as to why I decided to study in QLU and take the 2 + 2 program was because I was curious about living outside of the United States. This program was the perfect opportunity to keep on learning while being in a vibrant and exciting new culture. What I truly appreciated of this experience were the great student/professors network and also the fact that thanks to it I have many friends all over the world. That includes the unforgettable experiences such as losing my voice cheering on for the Louisville Cardinals Men's basketball team and also being a member of Sigma Kappa Sorority studying on main campus which were stepping stones for me to pick my values and create new routes to explore the world.



Luis Andres Castillo Vasquez

Logistics and Compliance Manager @ Golden Hill Ingredients LLC
Finance Major and Entrepreneurship and Economics Minors, 2015
Colegio San Agustin, 2011

I chose to study with QLU due to their 2 + 2 program. I thought it was going to provide me with the best business education and opportunities among the different options in Panama. I believe that what's great about this program is taking all the Gen Ed classes in Panama makes the process more accessible and the in state tuition, of course. Through my experience I can say that Finance is a challenging but worthwhile program in the College of Business in Louisville. It provides great opportunities and the professors and staff are the top of the school. It also gave me the best chance to continue my education and enroll in the MBA program. I obtained this through internship, which I got since I was part of the Board of Overseers Mentorship Program. They select people based on the GPA and it is run through the honors program at UofL. They match your fields of interests with a mentor in the community. My mentor was the owner of the company where I work now. I would definitely recommend this program to others; being able to go to a top university in the US provided me with all the tools I needed to follow my dreams and be successful.



Astrid Castillero

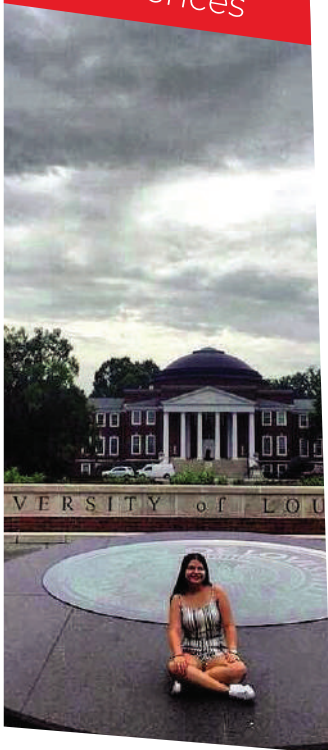
Co-Owner + Digital Strategy Director at The Digital Life, Digital Marketing Agency.
Bachelor in Business Administration with a concentration in Management, Towson University 2014.
Magna Cum Laude.
The Oxford School 2010

Along with my parents, I started my research during my senior year and happened to be interested in QLU Business Administration - Management Program. Later that year, my school took my class to visit QLU campus among other universities, and I instantly pictured myself studying here. I think of QLU as having education and opportunities without boundaries. The program they offered was very complete and with the opportunity to continue my education in English and receive a diploma from the United States while studying in Panama was on top of my list. Studying in QLU was definitely the best decision for my undergraduate education. Thanks to QLU I got my first job in a multinational company during my junior year, worked there for up to 2.5 years starting as an intern up to becoming the Digital Marketing Leader for renowned brands in Central America and the Caribbean. Thanks to that experience I discovered this field is my passion and decided to specialize in that area.

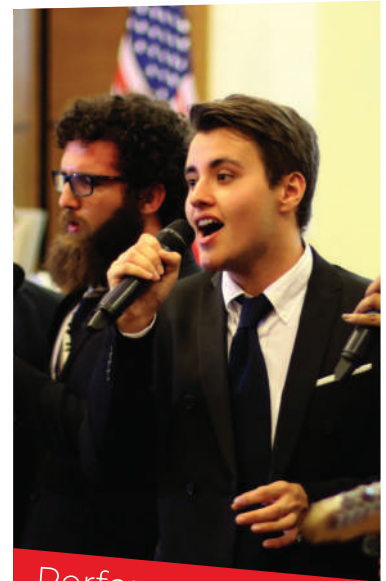


STUDENT LIFE

International
Experiences



Debate Club



Performance Club



Leadership
Workshop



Sports Life



Quality Leadership University

Please return this completed application and all required credentials to:

45th Street, Bella Vista
Panama City, Republic of Panama
Telephone: (507) 264-0777

ADMISSION REQUIREMENTS

FRESHMAN APPLICANTS	TRANSFER APPLICANTS
<input type="checkbox"/> Application for Undergraduate Admissions <input type="checkbox"/> Official ACT or SAT test scores* <input type="checkbox"/> Official high school transcript <input type="checkbox"/> TOEFL and/or Institutional TOEFL	Transfer applicants with 23 or fewer semester hours earned or in progress must submit the following: <input type="checkbox"/> Application for Undergraduate Admissions <input type="checkbox"/> Official ACT or SAT test scores* <input type="checkbox"/> Official high school transcript including the date of graduation. An official transcript must also be submitted from EACH college or university attended even if credit was not earned <input type="checkbox"/> TOEFL or Institutional TOEFL Transfer applicants with 24 or more semester hours earned or in progress must submit the following: <input type="checkbox"/> Application for Undergraduate Admissions <input type="checkbox"/> An official transcript from EACH college or university attended must be submitted even if credit was not earned. All University of Louisville transcripts will automatically be submitted with this application. <input type="checkbox"/> TOEFL or Institutional TOEFL

*must be submitted directly from test agency to the University of Louisville Office of Admissions

PERSONAL DATA

(Applications that are not typed or printed legibly will not be accepted)

1. Full Legal Name: Ms./ Mr. _____ Last (family name) First Name Other names under which records may be listed _____	
2. Date of Birth: ____ / ____ / ____ m m d d y y	3. Sex: _____ Male _____ Female
4. Citizenship: Country of Birth _____ City of Birth _____ Country of Citizenship: _____ Country of legal permanent residency: _____	5. Ethnic Background (check one) <input type="checkbox"/> White/Non-Hispanic <input type="checkbox"/> Hispanic <input type="checkbox"/> Black/African-American <input type="checkbox"/> American Indian <input type="checkbox"/> Asian or Pacific Islander
6. Address: _____ (Home Address) Street _____ City Country _____ (Mailing address, if different)	7. Telephone: (_____) _____ Home Phone (_____) _____ Alternate Phone
	8. Email Address: _____
9. Emergency Contact: Name _____ Relationship _____ Address _____ Telephone _____	

EDUCATIONAL INFORMATION

*Transcripts from previously attended institutions are required.

List ALL high schools attended (beginning with most recent):

Name	City /State/Country	Attended (mo/yr)	Date of Graduation
_____	_____	___/___ to ___/___	_____
_____	_____	___/___ to ___/___	_____

List ALL colleges attended (beginning with most recent):

Name	City /State/Country	Attended (mo/yr)	Degree
_____	_____	___/___ to ___/___	_____
_____	_____	___/___ to ___/___	_____

Are you currently enrolled in college? ____ Yes ____ No

Total credit hours earned _____

Cumulative Grade Point Average _____

Academic Status at the last college attended: ____ Good Standing ____ Probation ____ Dismissal

I understand that making false statements and providing incomplete information may result in the cancellation of my admission and/or registration. I certify that the information provided in completing this application is true and correct.

Signature

Date

The University of Louisville is an equal opportunity institution and does not discriminate against persons because of race, age, religion, sex, handicap, color, or national origin. Completion of related items is optional; however, it will aid in the prompt processing of your application and will be used for federal, state, and affirmative action reporting purposes.

For Office Use Only:

PRG: _____ PLAN: _____ TERM: _____ GRP: _____

ACTR: _____ RSTR: _____ ACAD/LEV: _____

NR ☐

Contingencies:

☐ FT/HS ☐ FT/ _____

Other: _____

Adm. Cond. Ckfst: _____

Enclosure _____

Date: _____ By: _____

Notes: _____

Missing: _____

Test Scores: _____

Toefl: _____

Transcripts: _____

GPA: _____ ACT/SAT: _____

PCCE ☐

Fee Payment: _____

[illegible]

QLU QUALITY LEADERSHIP UNIVERSITY

UNIVERSITY OF
LOUISVILLE



ILLINOIS STATE
UNIVERSITY
Illinois' first public university



@qlupanama



qlupanama



qlupanama



www.qlu.pa



264-0777



info@qlu.pa